

C
S
O
L
I
D
-133



The Flooring Solutions

your color story

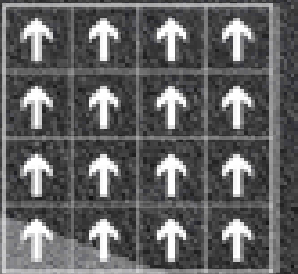
PATTERNS

50cm x 50cm 60cm x 60cm

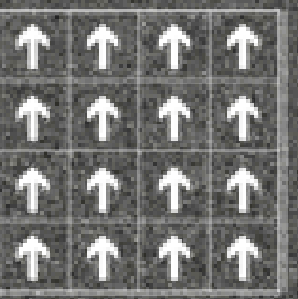
INDEX

PAGE

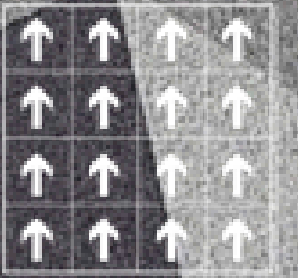
C-SOLID 133002-67	2
C-SOLID 133003-36-67	3
C-SOLID 133002-11-19-32-36-61	4
C-SOLID 133011-36-59-54-55-56	5
C-SOLID 133002-03-12-67	6
C-SOLID 133011-63-32-36	7
C-SOLID 133038-39-64-67	8
C-SOLID 133011-67	9
C-SOLID 133061-35	10
C-SOLID 133003-35-51	11
Specification	16



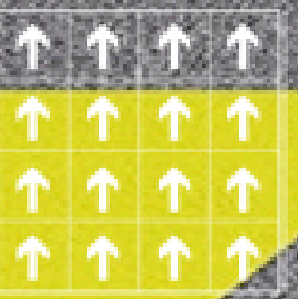
C-SOLID 133002-67



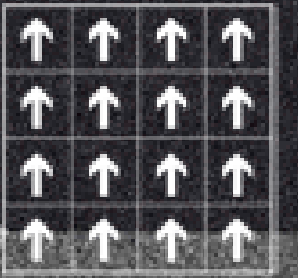
C-SOLID 133003-36-67



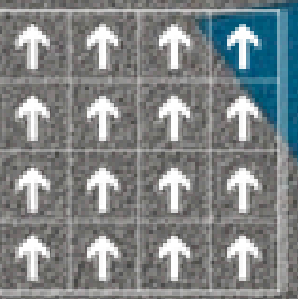
C-SOLID 133002-11-19-32-36-61



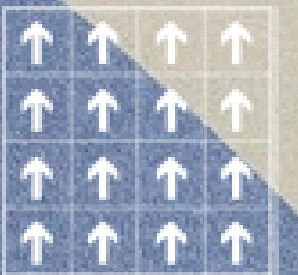
C-SOLID 133011-36-59-54-55-56



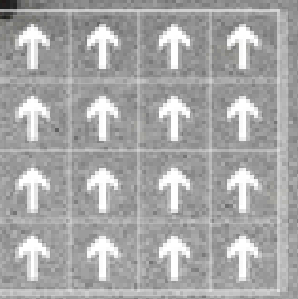
C-SOLID 133002-03-12-67



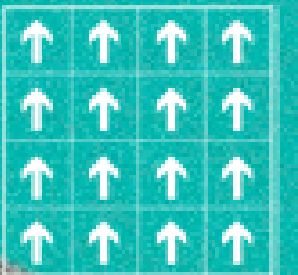
C-SOLID 133011-63-32-36



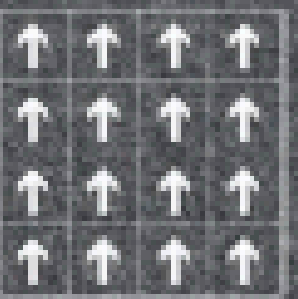
C-SOLID 133038-39-64-67



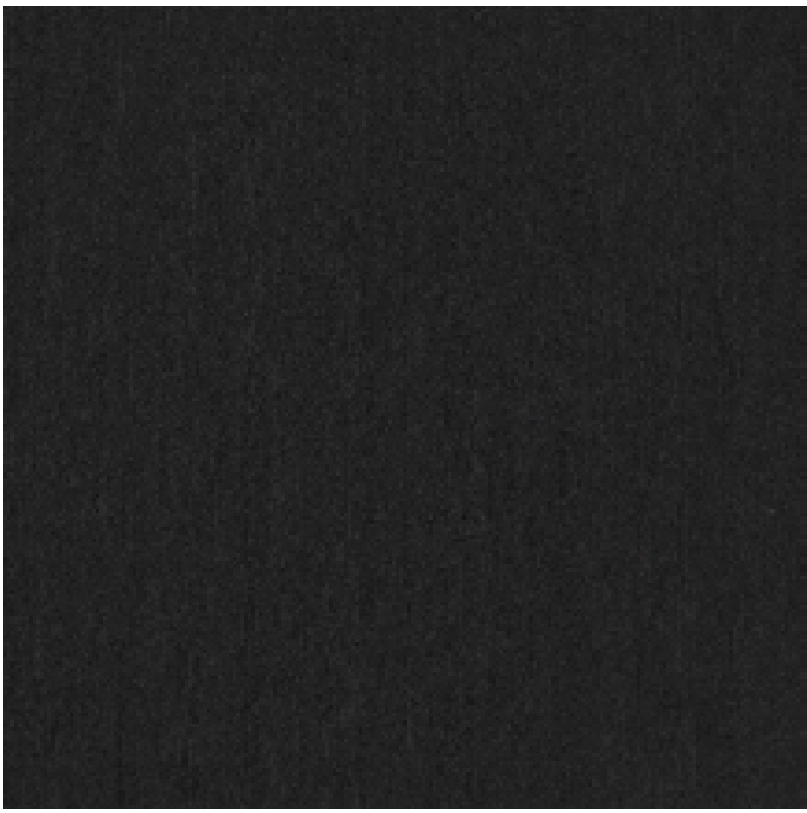
C-SOLID 133011-67



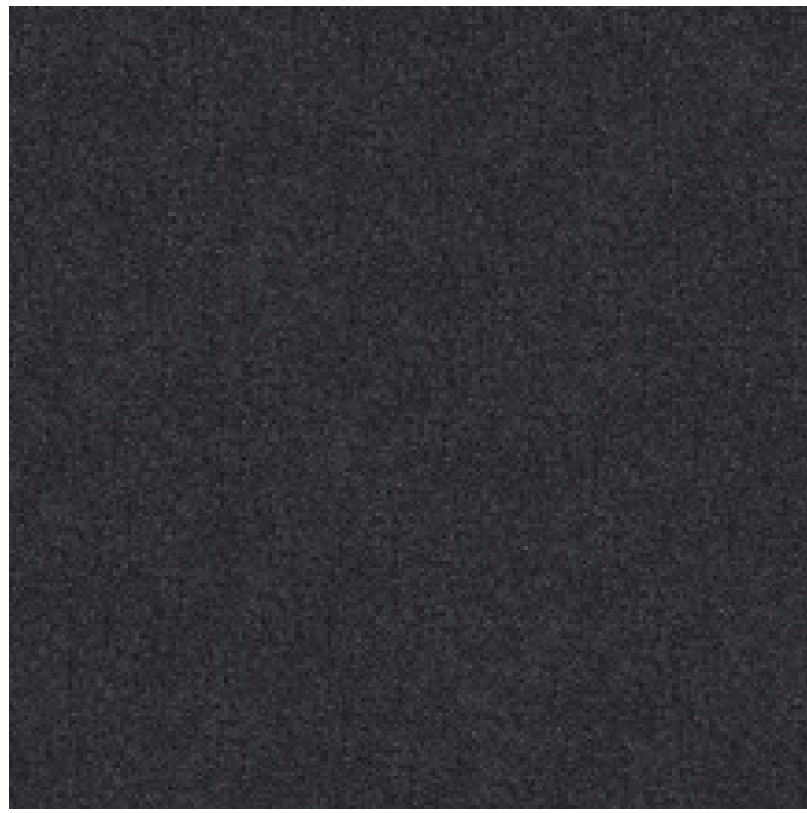
C-SOLID 133061-35



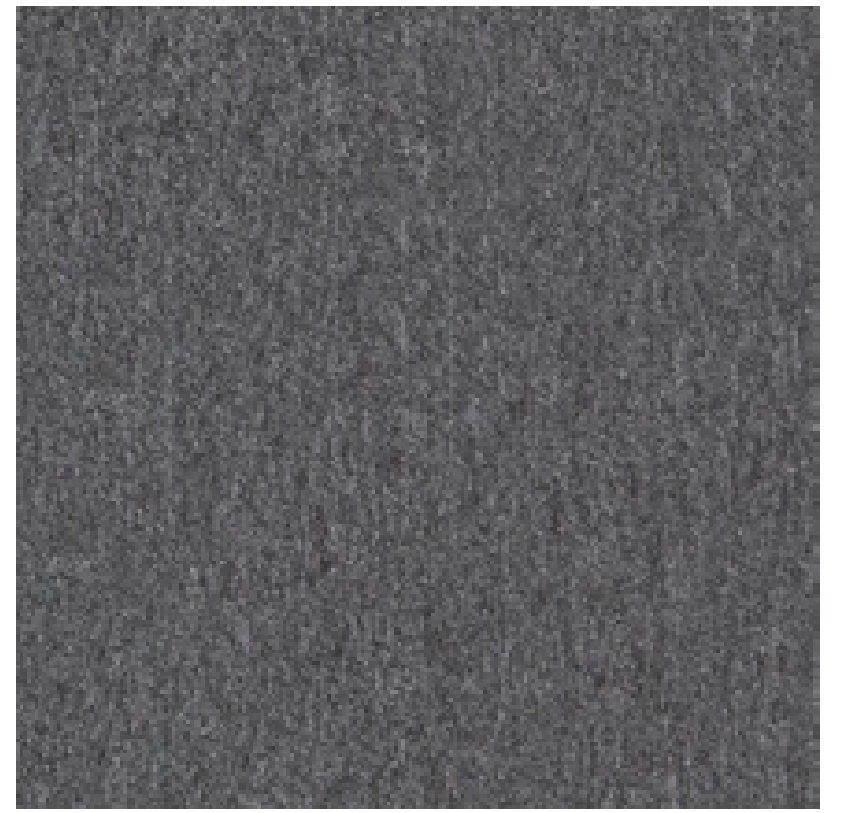
C-SOLID 133003-35-51



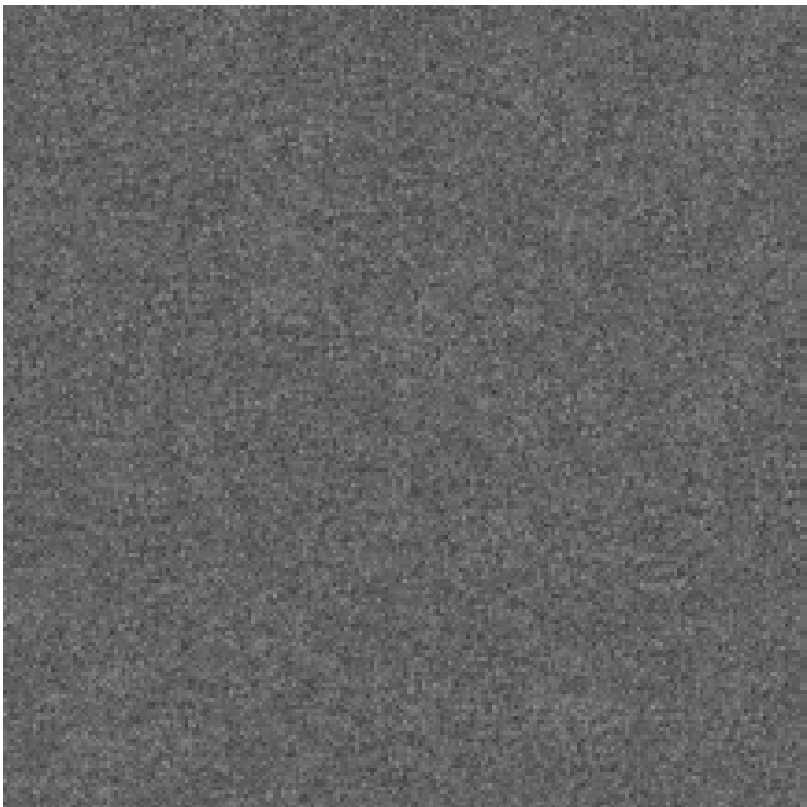
C-SOLID 133068



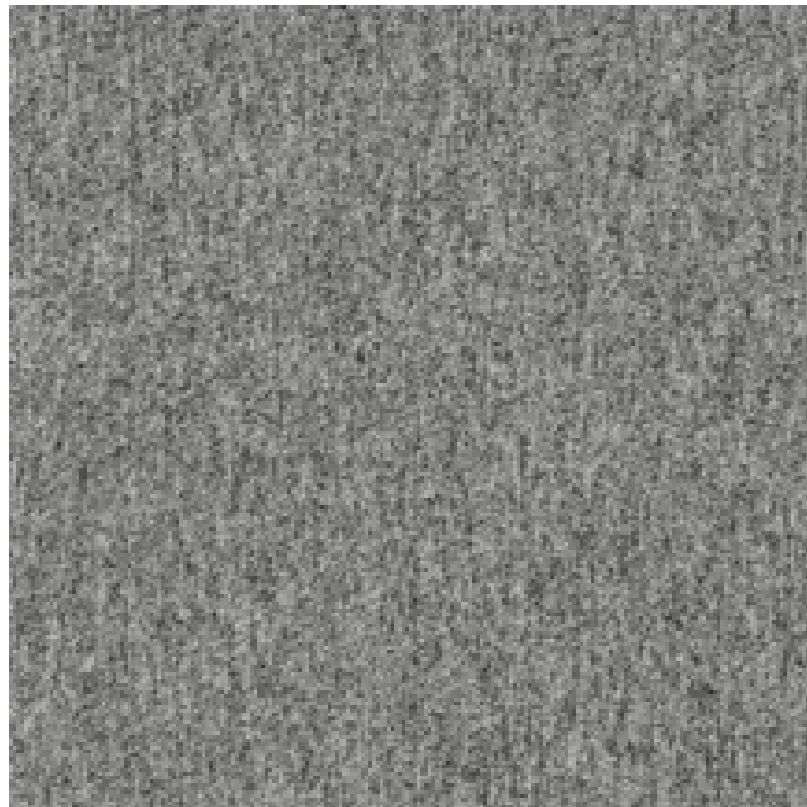
C-SOLID133002



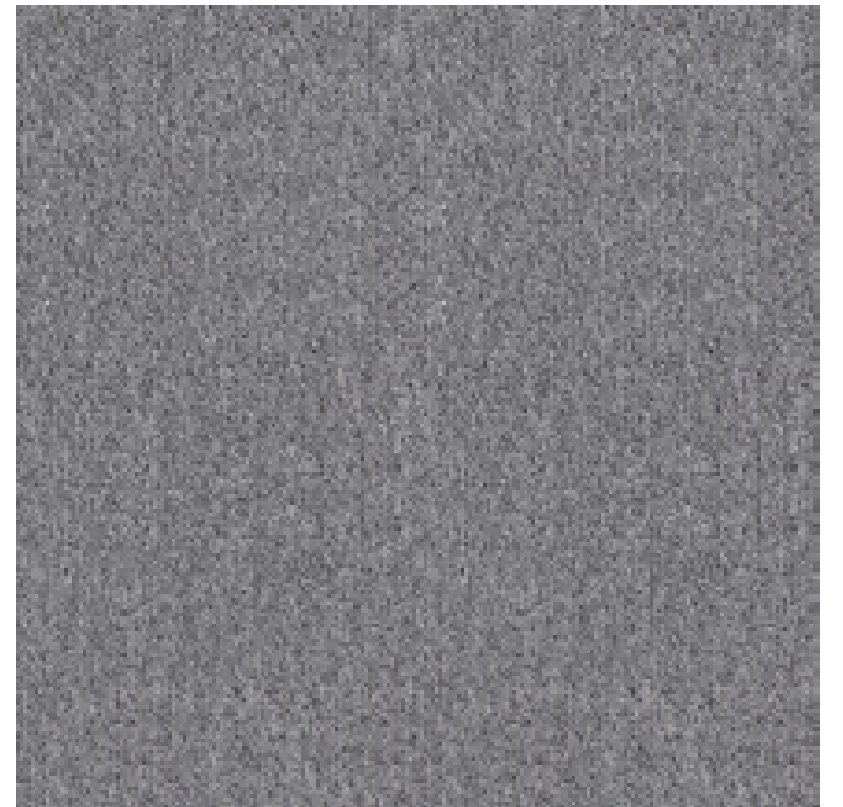
C-SOLID 133011



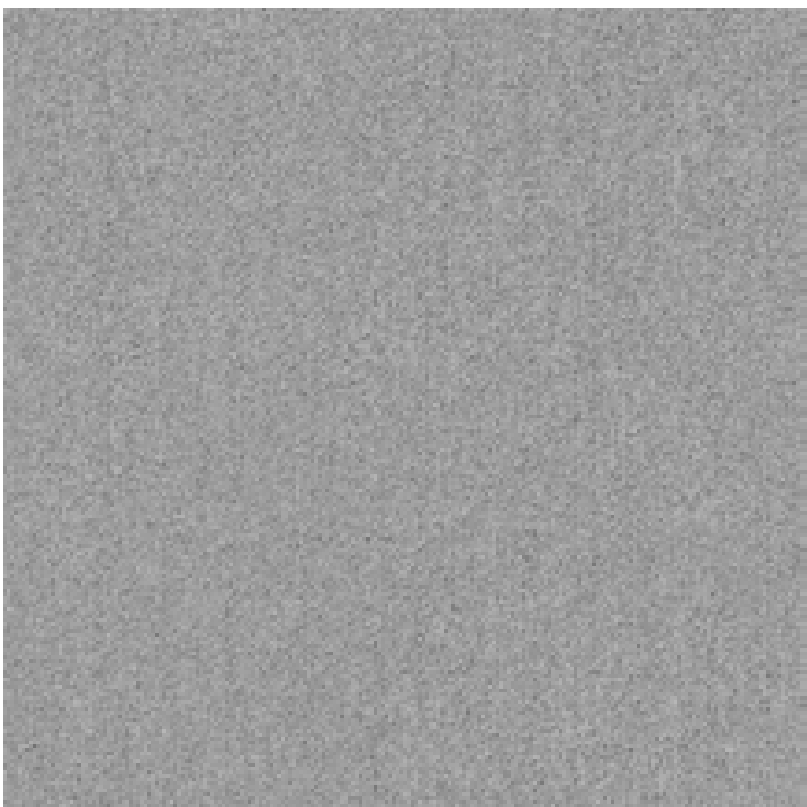
C-SOLID 133003



C-SOLID133035



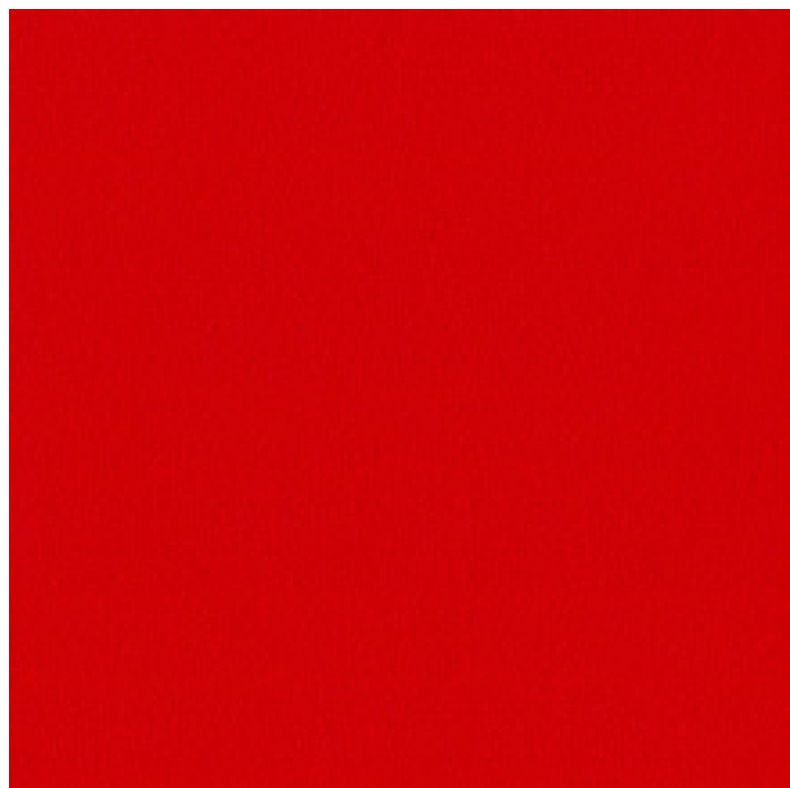
C-SOLID 133036



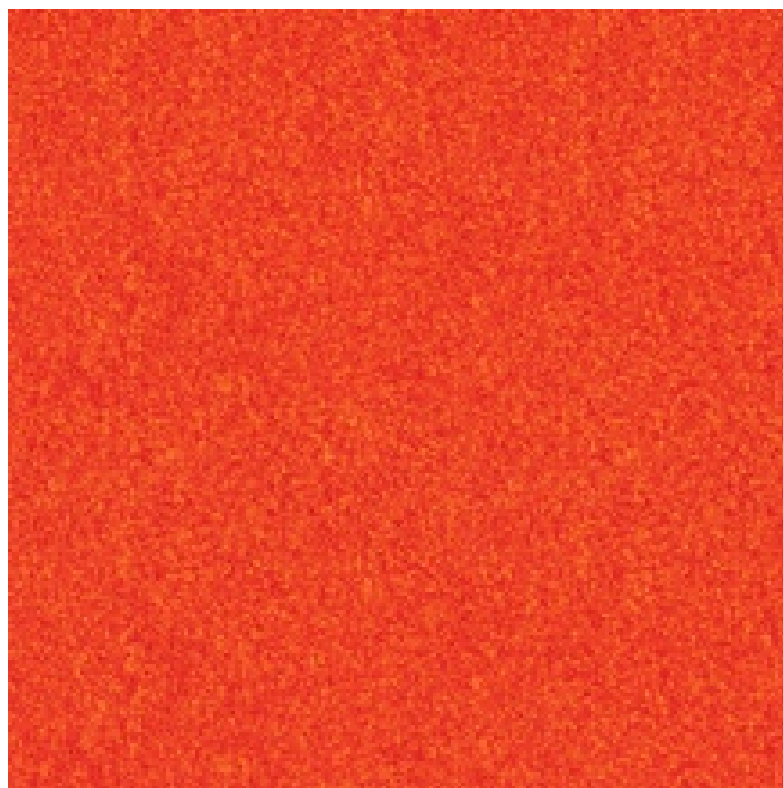
C-SOLID 133067



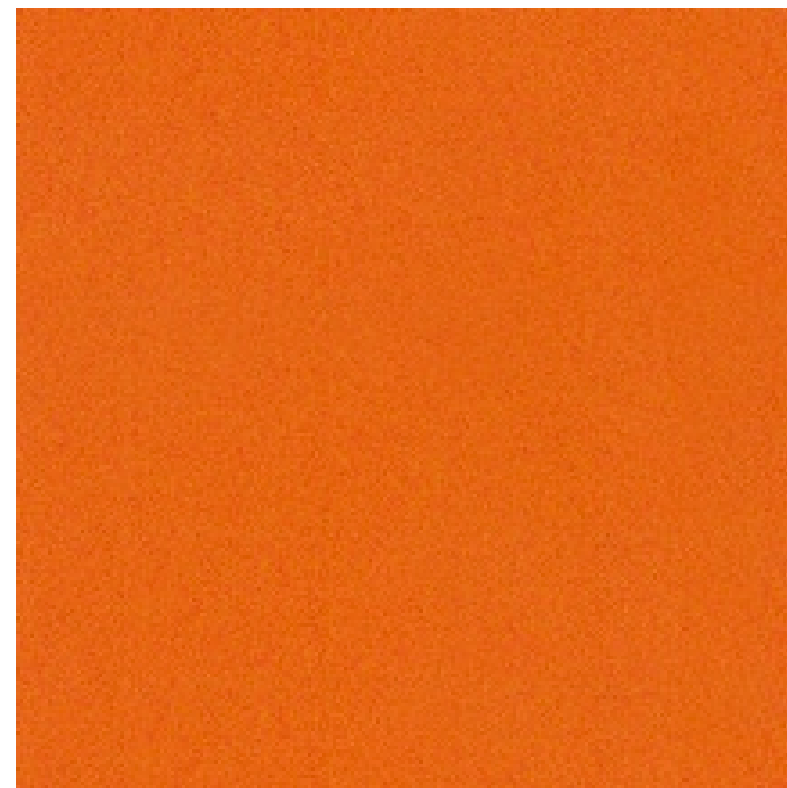
C-SOLID133032



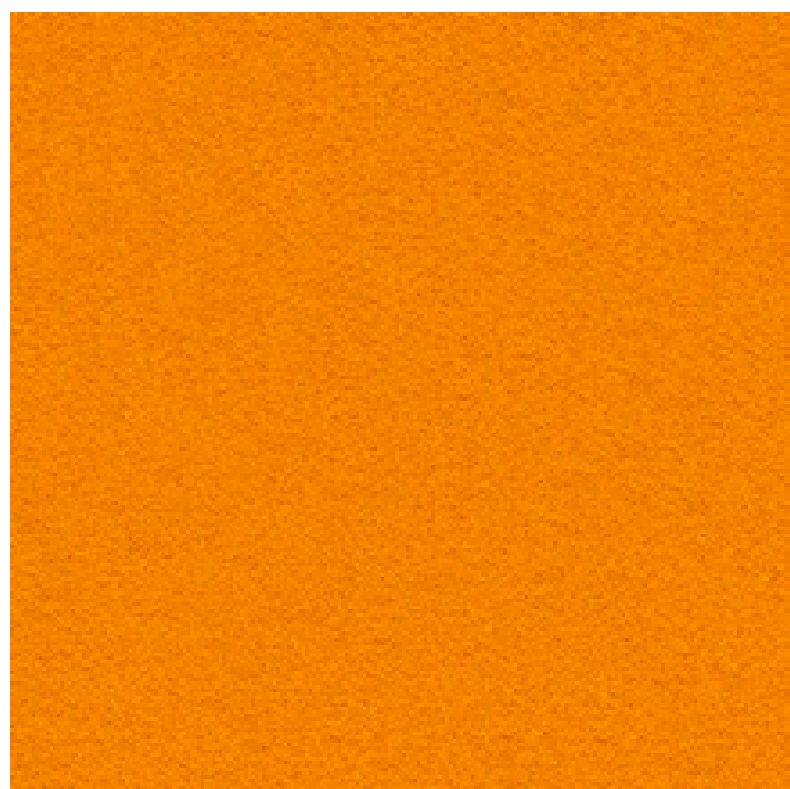
C-SOLID133018



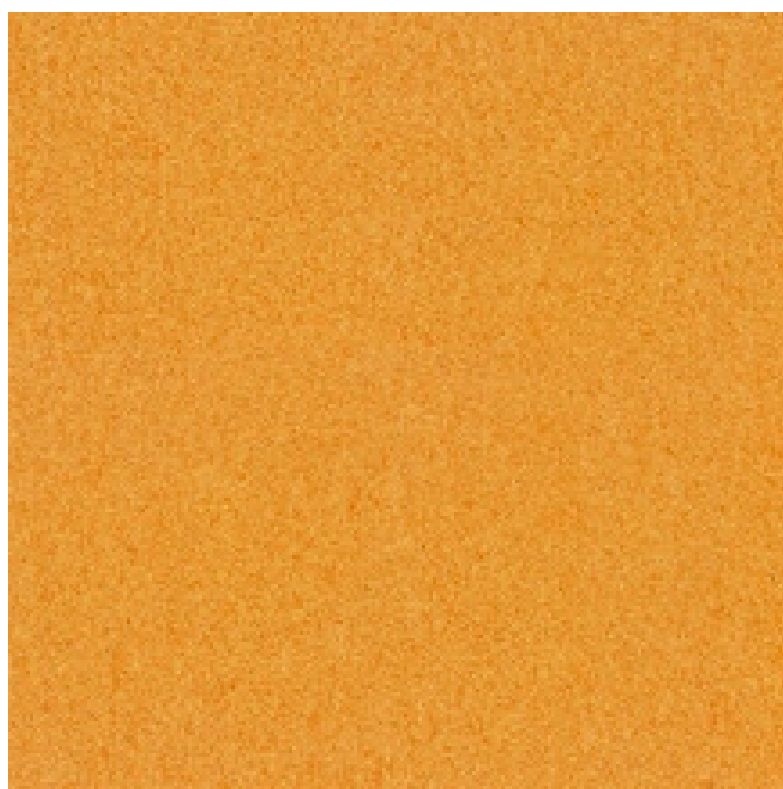
C-SOLID 133051



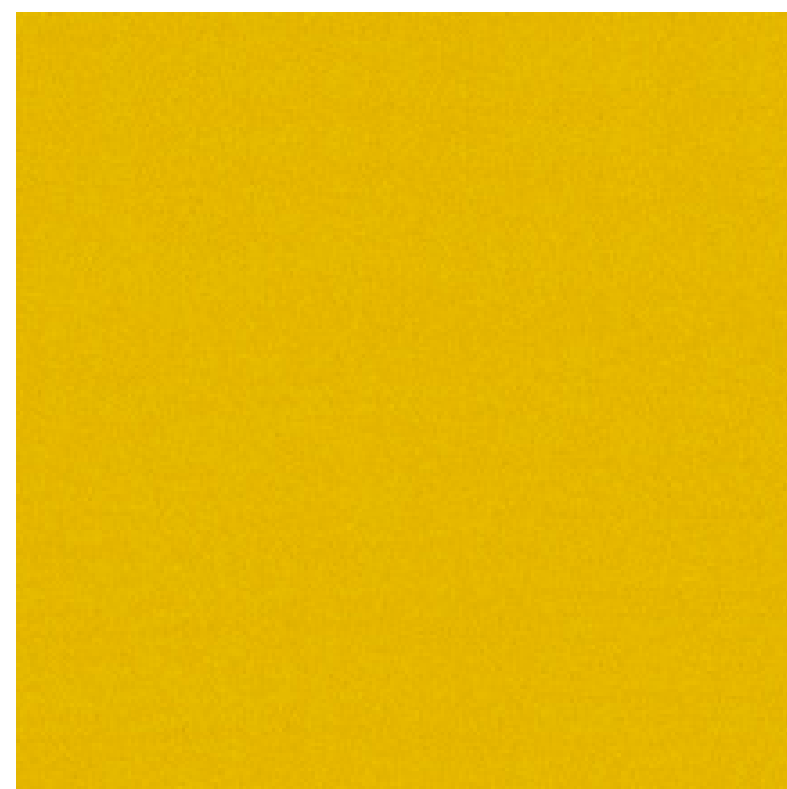
C-SOLID 133052



C-SOLID133025



C-SOLID 133053



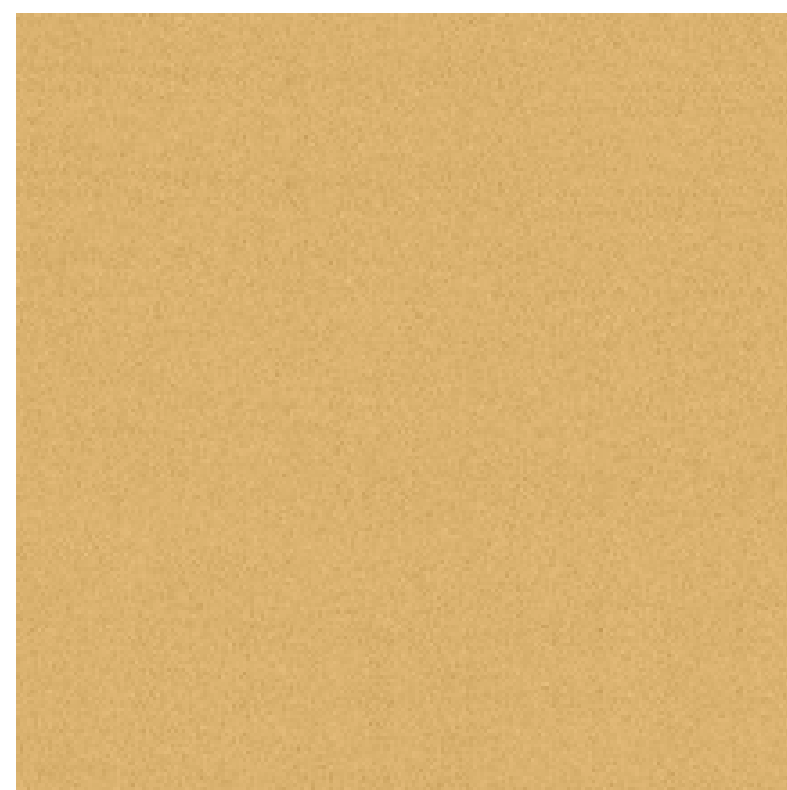
C-SOLID 133019



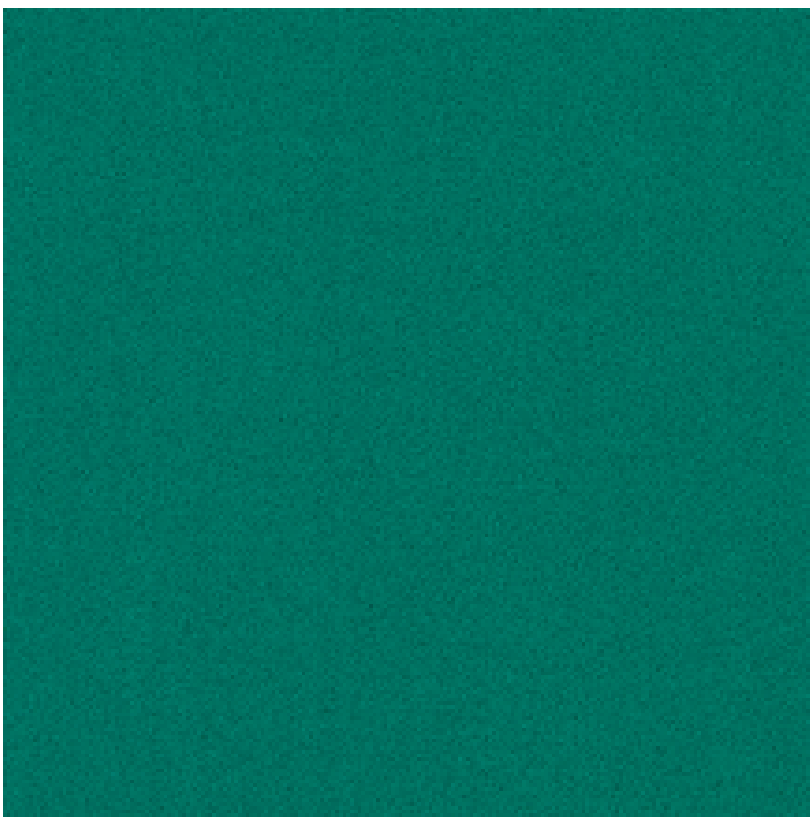
C-SOLID133041



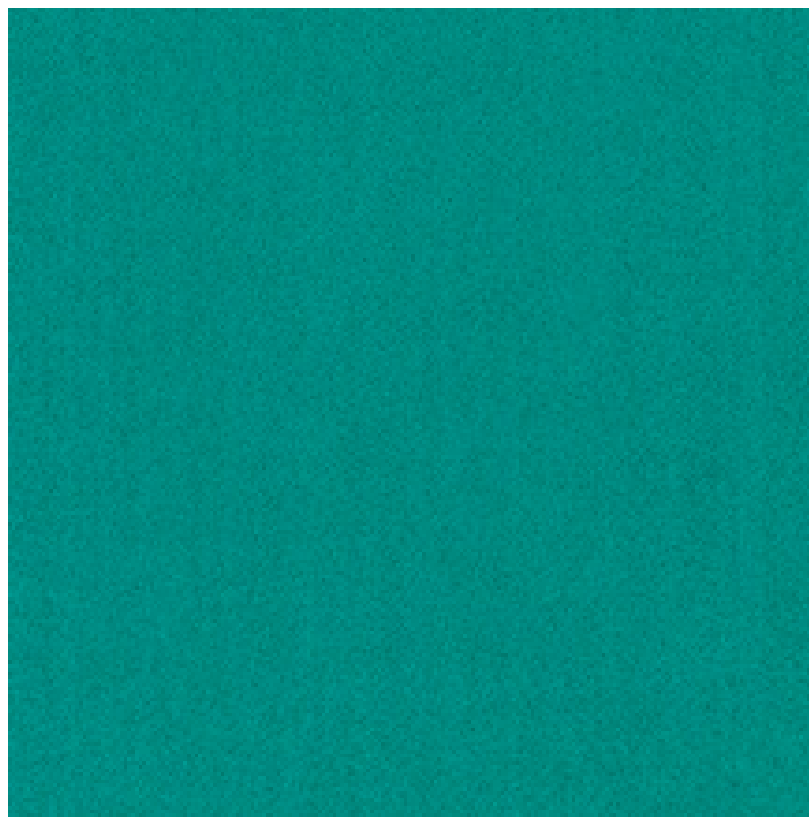
C-SOLID 133012



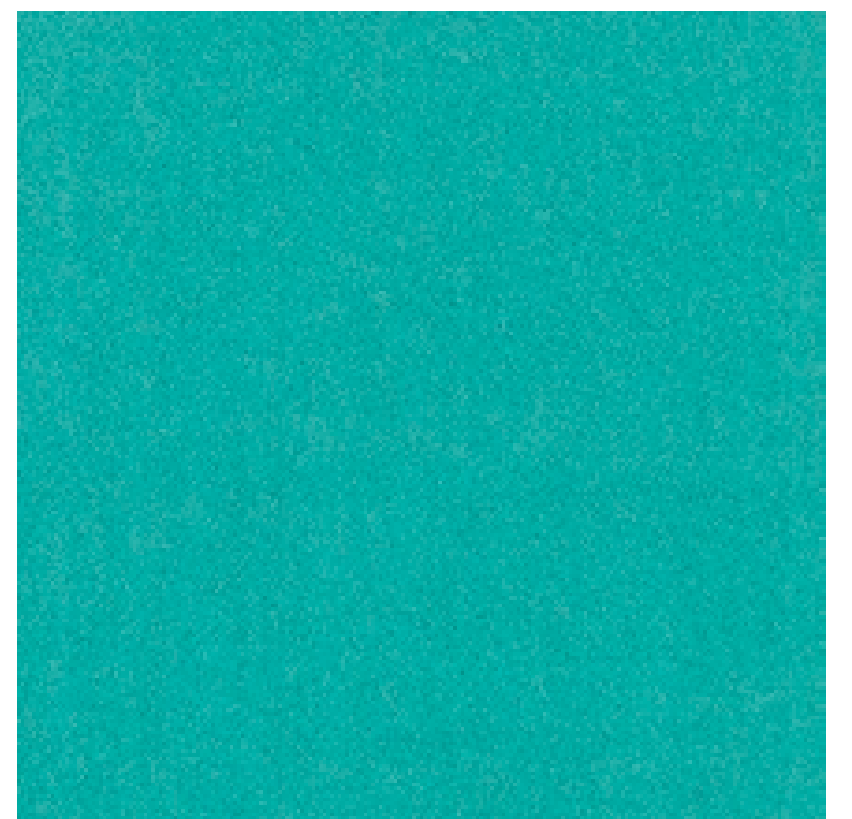
C-SOLID 133010



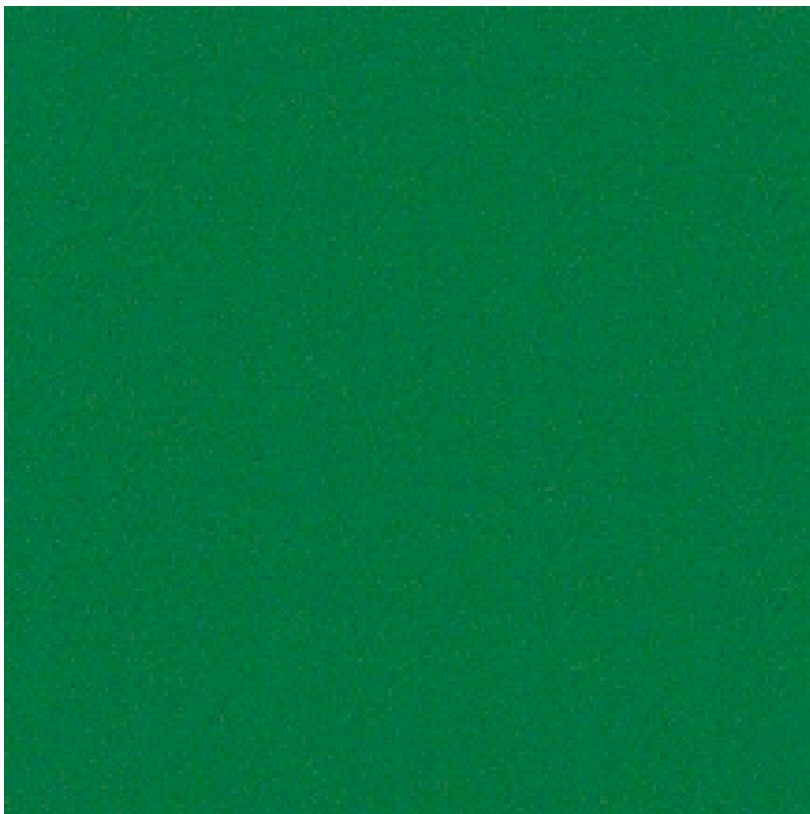
C-SOLID 133059



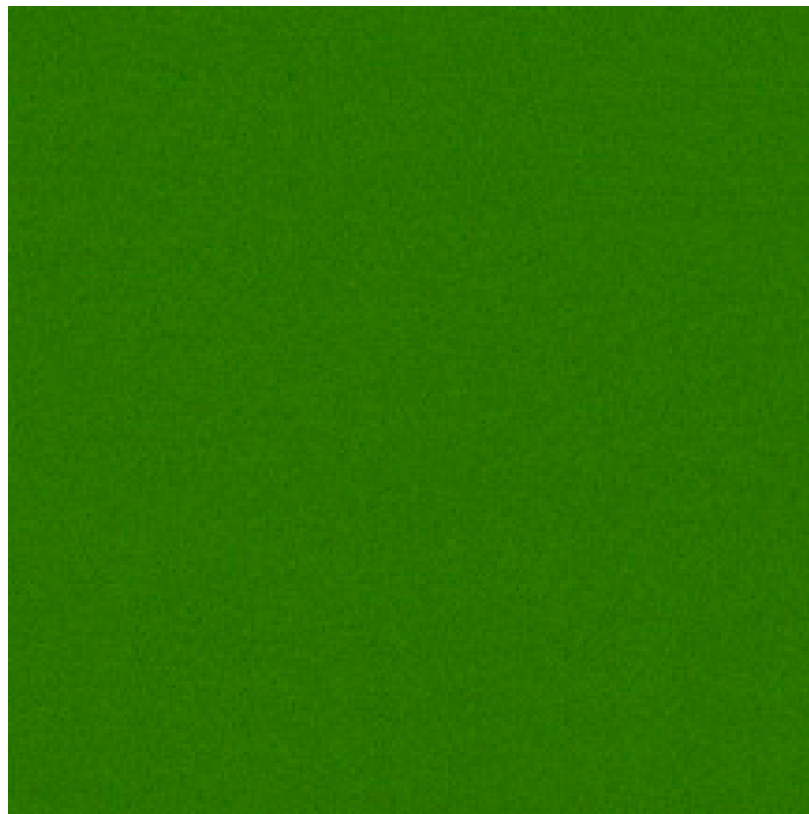
C-SOLID133060



C-SOLID133061



C-SOLID 133058



C-SOLID133057



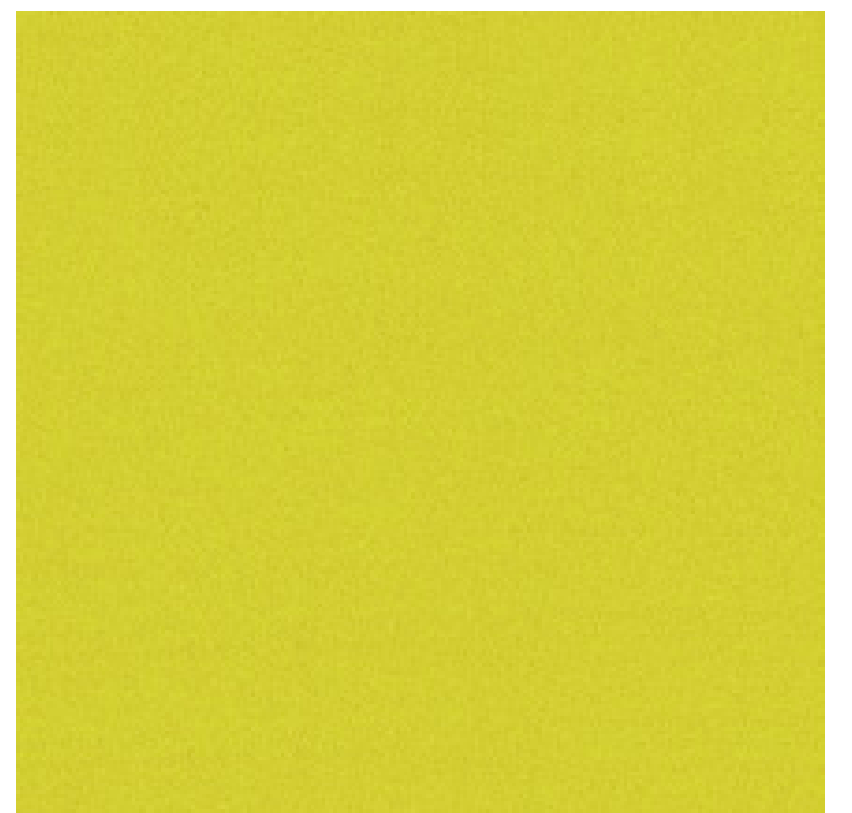
C-SOLID133029



C-SOLID 133056



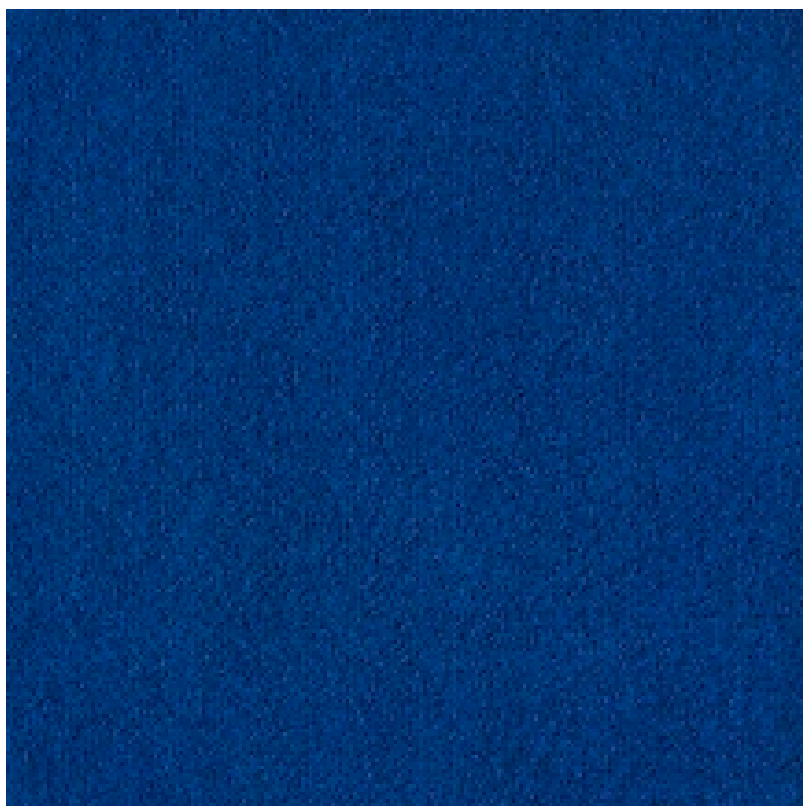
C-SOLID133055



C-SOLID133054



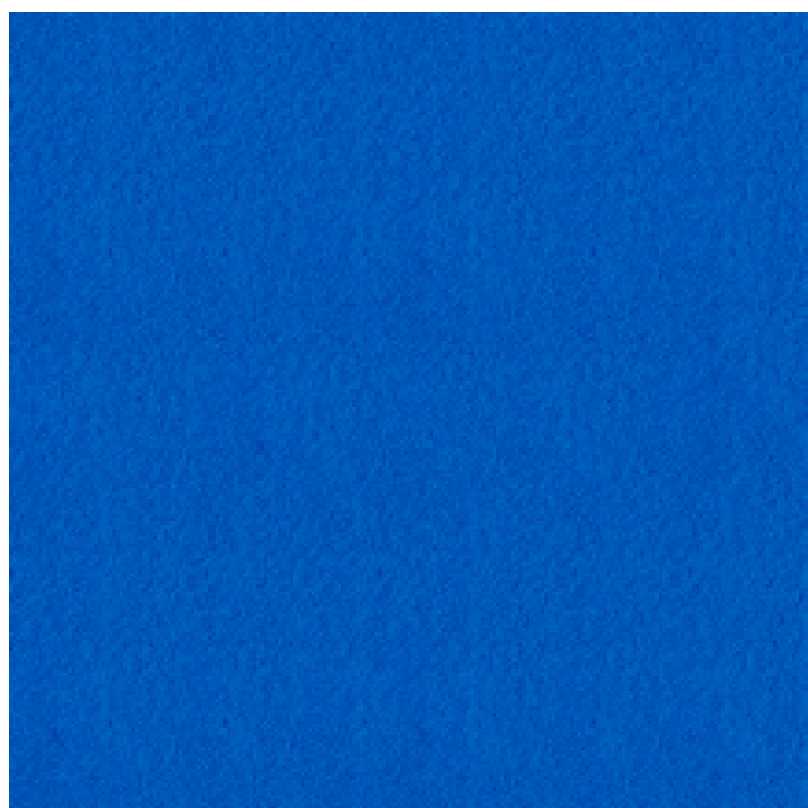
C-SOLID133040



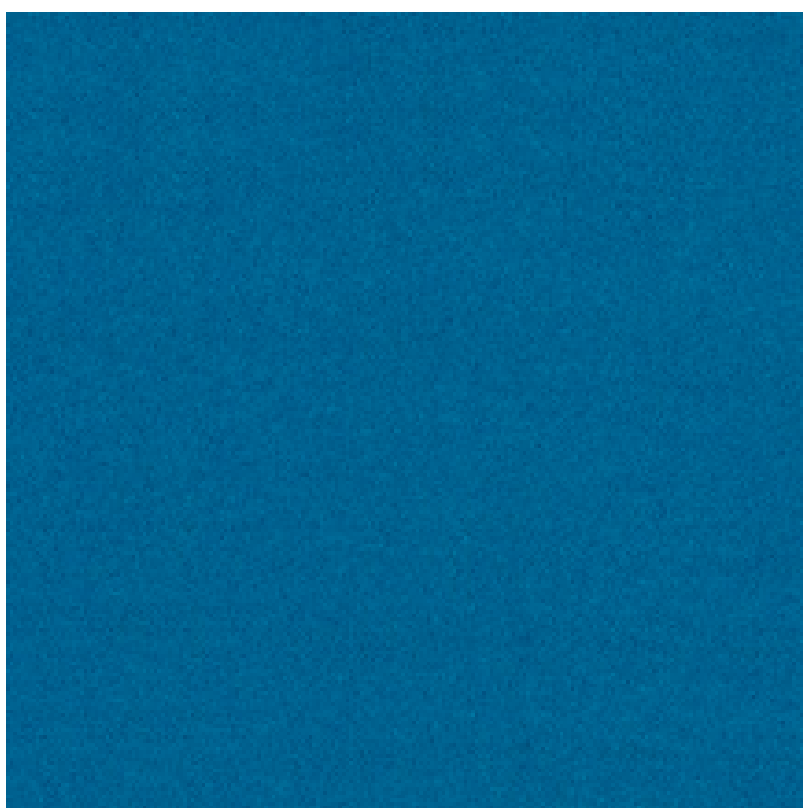
C-SOLID133038



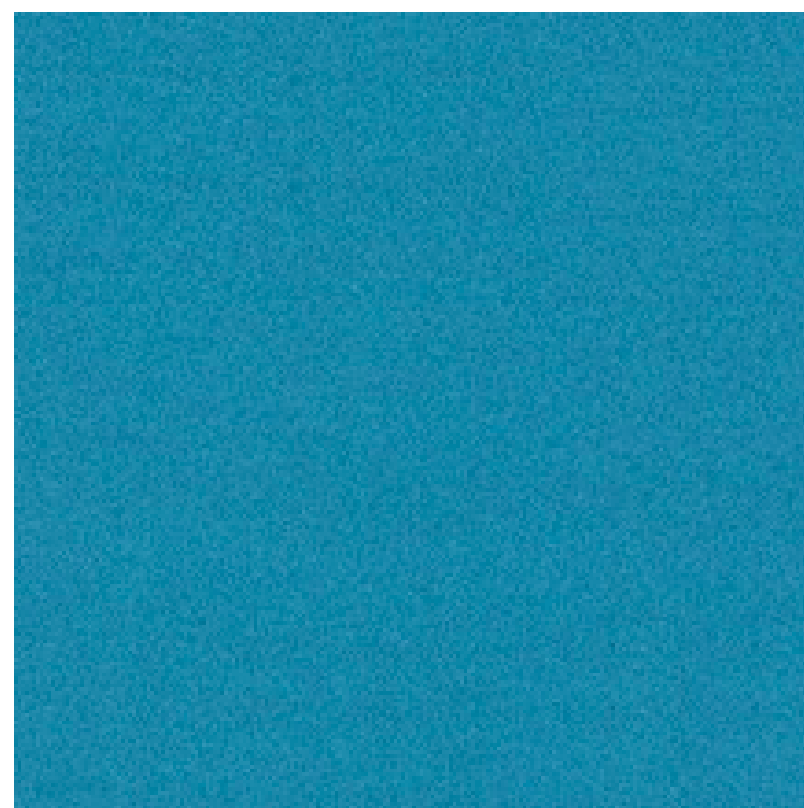
C-SOLID133039



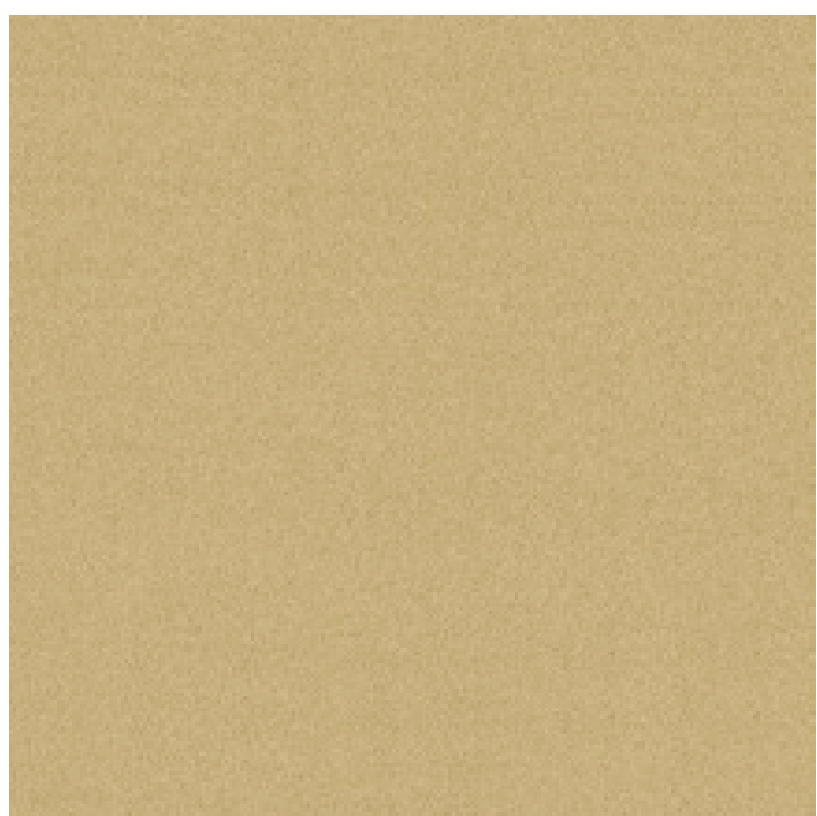
C-SOLID133016



C-SOLID133063



C-SOLID133062



C-SOLID133066

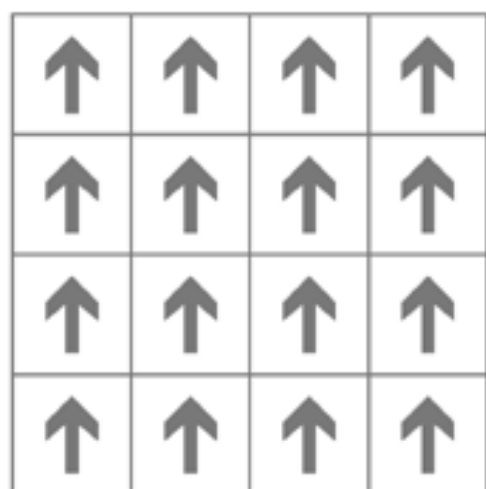


C-SOLID133064

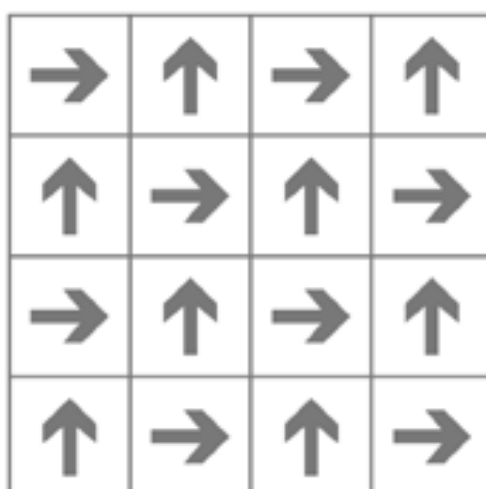
Specification

Product Name	C-SOLID 133
Product Code	C-SOLID 133
Tufted construction	Level Loop
Fiber	100% Nylon
Dye method	Solution Dyed
Gauge	5/64
Tufted weight(g/m ²)	550 ± 5%
Tile size(mm)	500 x 500 / 600 x 600
Pile height(mm)	4.0 ± 0.5
Total thickness(mm)	6.5 ± 0.5
Standard Backing	Glass fiber reinforced PVC

Recommended installation methods



Monolithic



Quarter-Turn

